

A TrimmMaster Senator

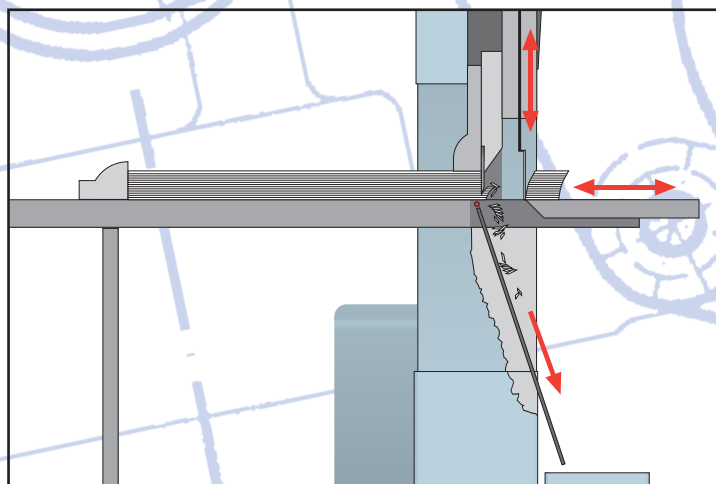


Technical Data:

Senator TrimmMaster	115	137	155	185
Width of the table opening, mm / inch	115 / 4,53	115 / 4,53	115 / 4,53	160 / 6,30
Recommended maximum width of waste strips mm / inch	20 - 60 / 0,79-2,36, depending on operating height			
Time required for one work cycle	5 - 10 sec.			
Compressed air consumption	approx. 2 l per cycle			
Subject to technical modifications				

Please find other technical data and dimensions for the Senator guillotines in the appropriate product folders.

Cutting diagram of the Senator TrimmMaster:



Standard equipment

- Pneumatically opening of front table
- Stainless steel table surface, with air (choice of suction or blown air on front table)
- Transparent protective plexiglass plate
- Waste chute with slide ramp
- Integrated touch screen for easy use.

Optional extras

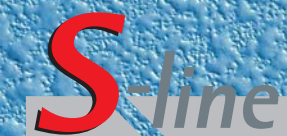
- Moveable waste container
- Conveyor belt under ramp for transporting waste to the left or right
- Conveyor belt for transporting waste into container
- Ramp or funnel for removing the shavings through an opening in the floor
- Funnel for suction removal.

SCHNEIDER SENATOR

A cut above the rest.

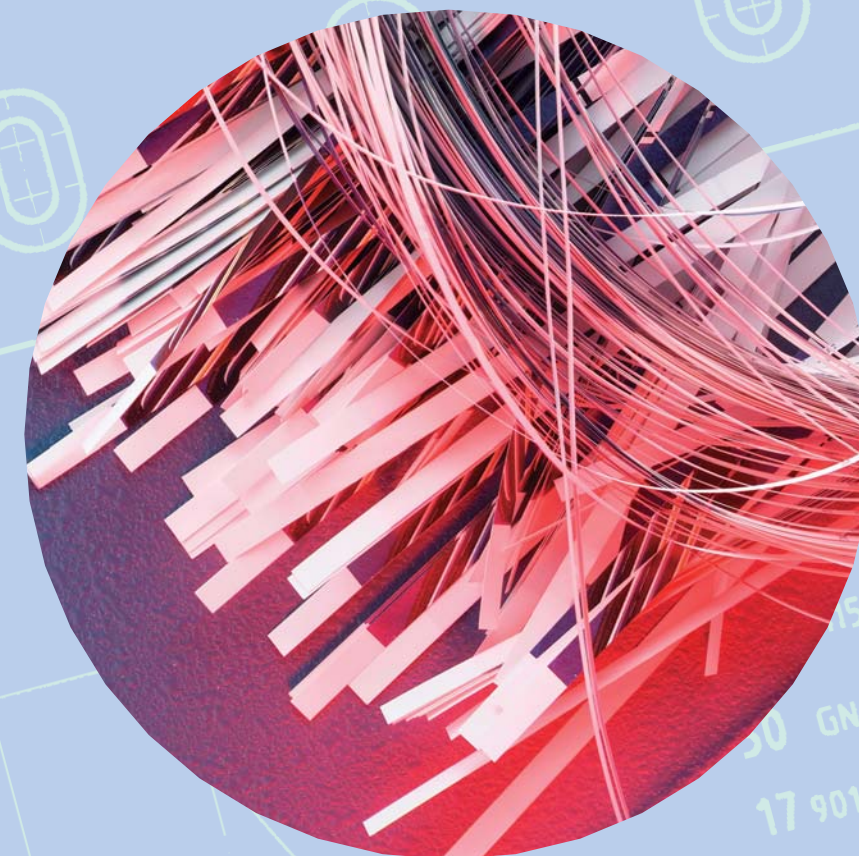
Senator Technology GmbH, Bürgermeister-Kröger-Str. 36, D-21244 Buchholz
 Phone +49 4186-971-0, Fax +49 4186-971-126
 E-Mail: info@senator-technology.de
www.senator-technology.com

Printed in Germany, 12.2003

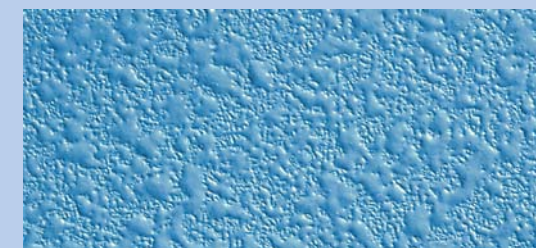


High Speed Cutter
Senator TrimmMaster

Clear cut.



SCHNEIDER SENATOR



Little features that add up to a big benefit.



Ideally suited for the optional TrimmMaster System: the fully hydraulic Senator 137 H.

Ideal for Labels:

Senator S-Line TrimmMaster

Significant time

savings on cutting and trimming allow you to

profit from the many features and benefits:

Available for sizes of 115 cm and wider, the

Senator TrimmMaster can be programmed for

fully automatic cutting and waste removal.

The results: an immense improvement

in cutting productivity.



Senator TrimmMaster: Fast waste removal thanks to the front table opening.

Waste paper simply disappears.

The TrimmMaster system is available as an optional extra for Senator S-Line models 115 to 185. The main enhancement of the system is the operation of the pull-out table made of VA stainless steel front table. When activated, a full width opening between this table and the cut line extracts the waste down a metal chute and into a container or conveyor belt for disposal. A retractable, transparent plexiglass plate automatically comes down in front of the VA stainless steel table to prevent any trimmings from landing on the front table.

Thanks to the Schneider Senator modern coloured TSC touchscreen controls, the intermediate cuts (including waste disposal) can be completed in a fully automatic manner.

Features

- Applicable for all guillotines with a cutting width of 115 cm or more.
- Stable, lightweight construction of the movable front table.
- Large opening along the entire cutting width.
- A stable, transparent, retractable cover plate.
- The TrimmMaster is operated using the Senator's touchscreen controls.
- TrimmMaster can be combined with all the other peripheral equipment offered by Schneider Senator.
- Options for waste removal: Free-standing conveyor belts under the front table for transporting trimmings to large waste bins, floor chute or suction removal device.

Advantages

- Suited for all paper sizes.
- Fast and quiet operation of the table's opening and closing.
- Safe and easy removal of even the widest shavings.
- Automatic operation allows the cutting zone to be isolated. No waste paper on the front table. Unrestricted view of the cutting process. The stack in front can be pushed against the plate, if required.
- Integrated into main control panel.
- A significant increase in performance.
- Fully automatic waste removal. Clear working area without cumbersome waste bins.



Before the cut: The material is placed in position. The front table is still closed.



The waste removal process is activated. The front table is opened and the plexiglass plate is lowered.



Cut – the waste paper falls into the gap.



The first batch has been cut and is lying on the front table. The TrimmMaster is ready for the next cut.